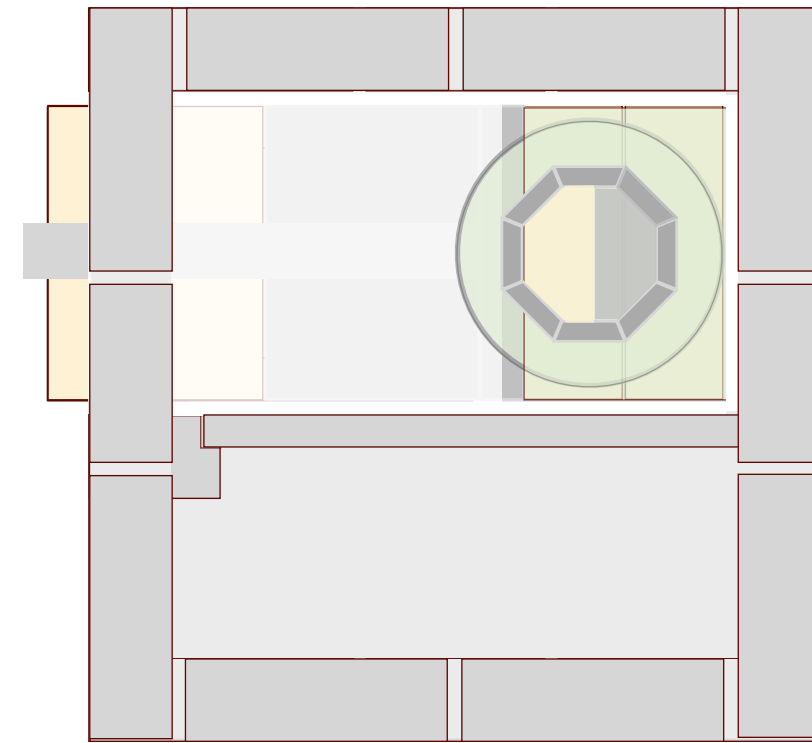
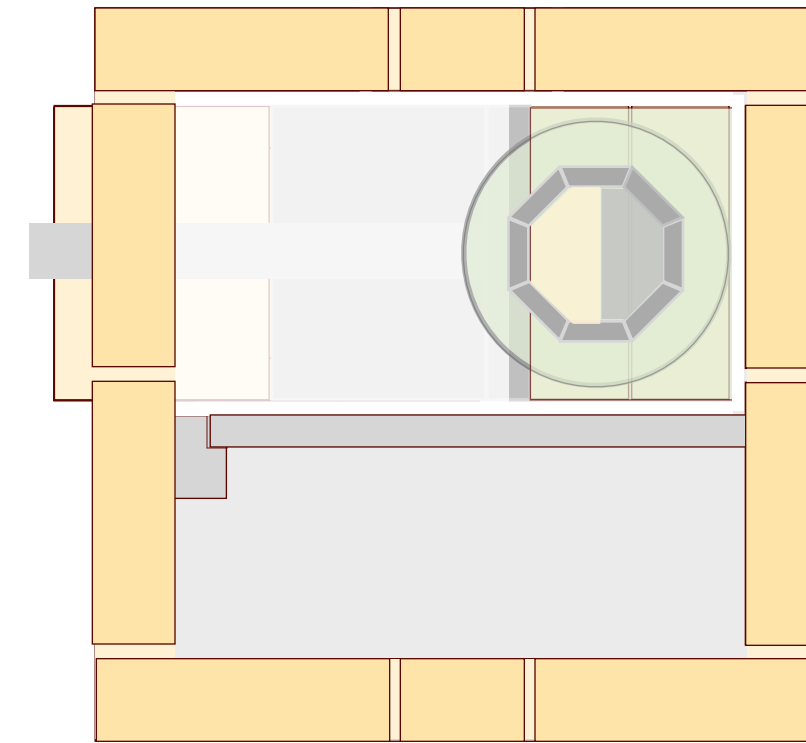


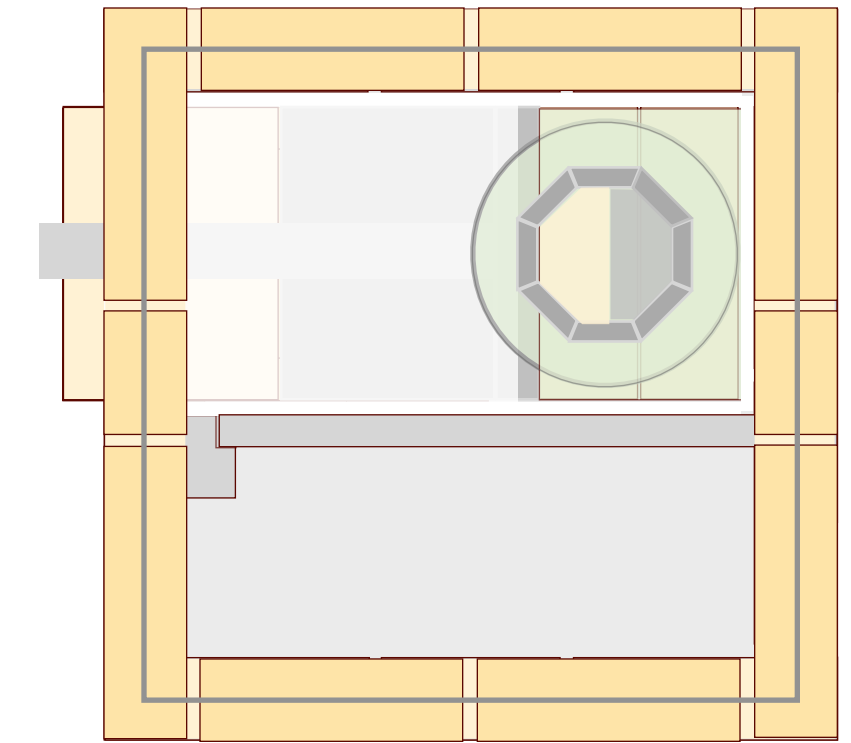
upper part riser



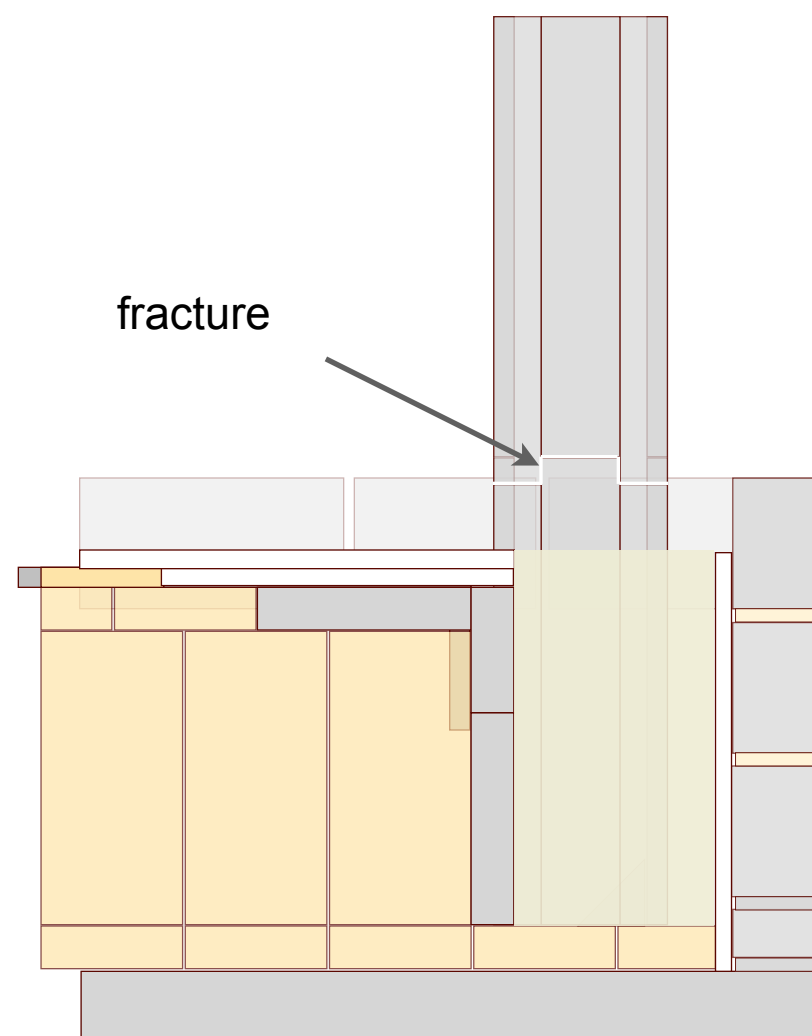
insulation, concrete masonry



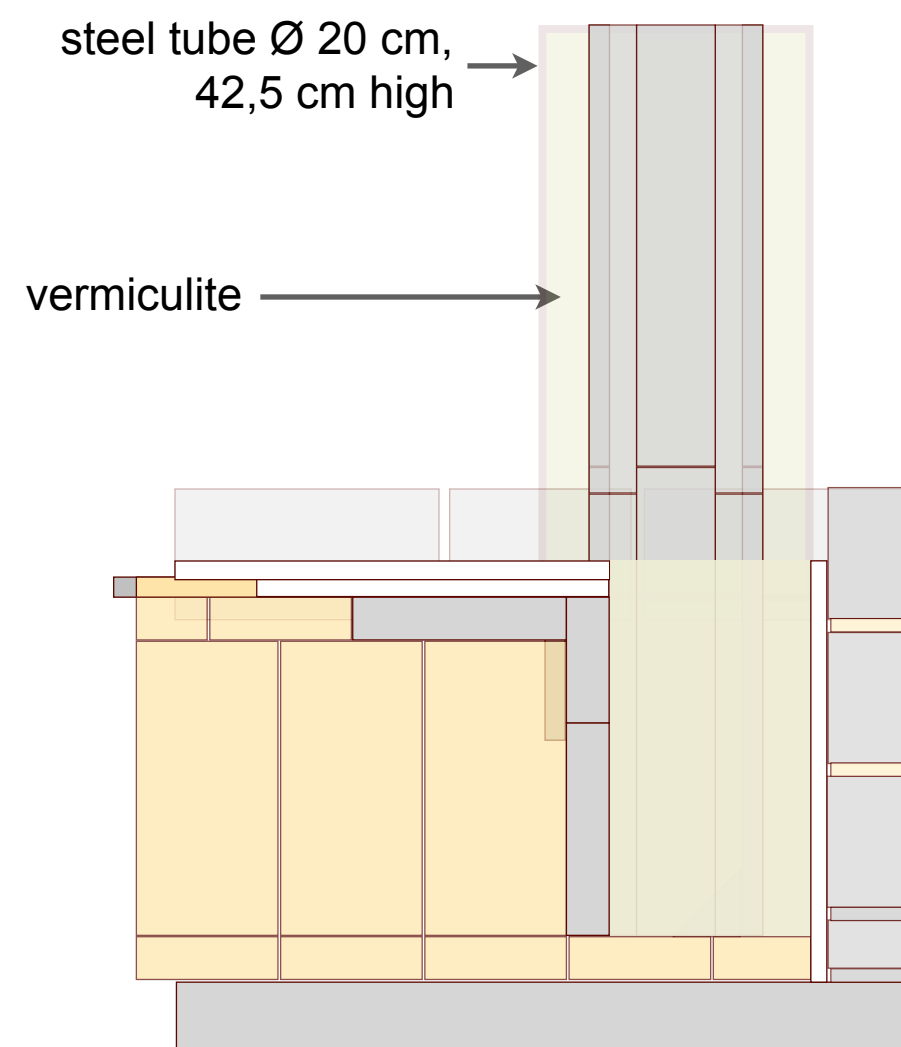
firebricks masonry



notch in top layer

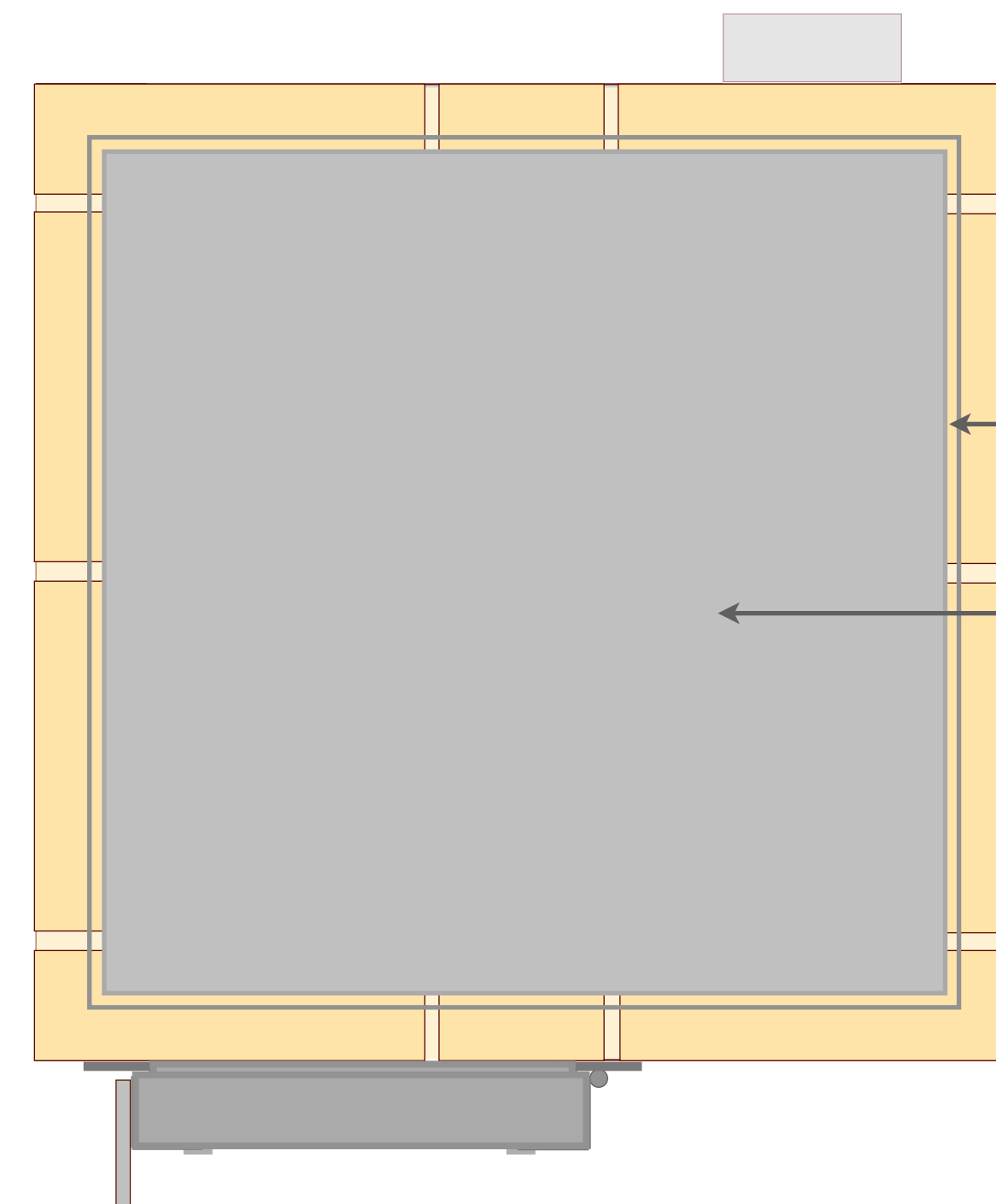


fracture



steel tube Ø 20 cm,  
42,5 cm high

vermiculite



margin 7,5 mm  
filled with fire cord

steel top plate 475x475x8 mm  
placed on strips of superwool

## 10. Insulation, building the bell, top plate, door